

Online Course Concept

Introduction to GIS

- Manage Course through the Distant Learning “Course Portal”
- Interact with course content through Moodle
 - accessed from the Course Portal
- Hold live sessions using
 - Adobe Connect Pro through the Distant Learning Department
 - Skype
- Office hours available via Skype. Instructor will be available M-F 9am to 4pm. Other times may be arrange at instructor discretion.

Course Portal

- Access the portal and login
 - <http://mediaserve.nmt.edu/portal/app/EODILecturePortal.html>

Welcome - Course Portal

Educational Outreach and Distance Instruction

All Users: The course portal is updated daily.

Enter your NMT ID Number:
(i.e. 900123456) - 9 Digit Number

Enter your Password:
Use your Portal password NOT your Banner password

Remember Me

[Forgot NMT ID Number?](#) [Forgot Password?](#)

1. Course Portal 2.0 Information
2. Course Portal Tutorial
3. Support Help Desk
4. Support Email
5. Distance Education Home

Distance Education at Tech provides both live and recorded lectures for a wide range of New Mexico Tech courses to students around the world. To find courses offered via distance education, go to <http://distance.nmt.edu/courses> or check the course listings on Banweb (<http://banweb.nmt.edu>). Distance courses have a "D" as part of their course number, e.g., EMGT 505D.

Developed by the Distance Education Department at New Mexico Tech. Powered by Adobe Flex

Course Function Menu

Course Information

This course is taught live on Tuesday and Thursday from 12:30 to 1:45.

Course Lectures

- Enter Live Lecture
- Recorded Lectures
- Downloadable Lectures
- Portable Device Downloads

Course Activities

- Instructor Announcement**
- Uploaded Course Files

Email

- Email From Portal
- Internal Email Account (0 new)

Additional Course Activities

- Navigate to Quizzes
- Navigate to Discussion Forum
- Navigate to Extended Course

Course Calendar (click on dates to view)

January 2010						
S	M	T	W	T	F	S
					1	2
3	4	5	6	7	8	9
10	11	12	13	14	15	16
17	18	19	20	21	22	23
24	25	26	27	28	29	30
31						

Instructor Announcements

Edit Announcements

Course Syllabus Posted. To navigate to the syllabus - in the left task pane, under the subheading "Additional Course Activities", click on "Navigate to Extended Course" button. In the center pane, under the "Topic outline" heading, click the link to "Course Syllabus". Most of our work will occur in the "Additional Course Activities". Be prepared to use it often.

Course Announcements

This is where the course content will reside. Links to Moodle

Students access course content through Moodle

The screenshot displays the Moodle interface for the course 'ENVS412D Geographic Info Systems'. At the top, it shows the date 'Sat, 23 Jan 2010' and the course title 'EDUCATIONAL OUTREACH AND DISTANCE INSTRUCTION COURSE PORTAL'. The user is logged in as 'Andrew Parker' with the role of 'Instructor'. The interface is divided into several sections:

- Course Function Menu:** Includes 'Course Information' (course is live on Tuesday and Thursday), 'Course Lectures' (Enter Live Lecture, Recorded Lectures, Downloadable Lectures, Portable Device Downloads), 'Course Activities' (Instructor Announcement, Uploaded Course Files), 'Email' (Email From Portal, Internal Email Account), and 'Additional Course Activities' (Navigate to Quizzes, Navigate to Discussion Forum, Navigate to Extended Course).
- Course Material:** Features 'Download', 'Upload', and 'Delete File' buttons, along with a 'Create Student Folders Automatically' checkbox. The course files section shows a folder named 'ENVS412D'.
- ENVS412D_Geographic_Info_Systems:** A detailed view of the course content. It includes a 'Topic outline' with sections for 'Lesson 1: introducing the course portal and live lecture' (containing 'General Chat' and 'Course Syllabus') and 'Lesson 2: Introduction to GIS' (containing 'Lecture PowerPoints' and 'Lecture: the course portal and live lecture'). Other sections include 'eMail list' (no messages), 'Search Forums' (advanced search), and 'Administration' (Turn editing on, Settings, Design roles, Groups, Backup, Restore, Import, Reset, Reports, Questions, Files, Unenrol me from ENVS412D_077, Profile).
- Recent Activity:** Shows activity since Saturday, 23 January 2010, 08:23 AM, including course updates and past chat sessions.
- Online Users:** Shows 'Andrew Parker' as online (last 5 minutes).

A large orange arrow points from the 'Course Calendar' (showing January 2010) to the text '...opens Moodle'.

Course Function Menu

Course Information

This course is taught live on Tuesday and Thursday from 12:30 to 1:45.

Course Lectures

- Enter Live Lecture
- Recorded Lectures
- Downloadable Lectures
- Portable Device Downloads

Course Activities

- Instructor Announcement
- Uploaded Course Files

Email

- Email From Portal
- Internal Email Account (0 new)

Additional Course Activities

- Navigate to Quizzes
- Navigate to Discussion Forum
- Navigate to Extended Course

Course Calendar (click on dates to view)

January 2010						
S	M	T	W	T	F	S
					1	2
3	4	5	6	7	8	9
10	11	12	13	14	15	16
17	18	19	20	21	22	23
24	25	26	27	28	29	30
31						

Instructor Announcements

Edit Announcements

Course Syllabus Posted. To navigate to the syllabus - in the left task pane, under the subheading "Additional Course Activities", click on "Navigate to Extended Course" button. In the center pane, under the "Topic outline" heading, click the link to "Course Syllabus". Most of our work will occur in the "Additional Course Activities". Be prepared to use it often.

Email – will not use email through the course portal

Email client of your choice

- Thunderbird
- Outlook
- Google, yahoo, msn
- etc

In other words, what you currently use

Extended Course (Moodle)

course content, chat, forum, and who is online

ENVS412D_Geographic_Info_Systems

Welcome to NMT Distance Education > ENVS412D_077

You are logged in as Andrew Parker (Logout)

Switch role to... Turn editing on

eMail list

Search Forums

Go

Advanced search ?

Administration

Topic outline

- General Forum
- General Chat
- Course Syllabus

Lesson 1: introducing the course portal and live lecture

- Lecture PowerPoints
- Lecture: the course portal and live lecture

Lesson 2: Introduction to GIS

Recent Activity

Activity since Saturday, 23 January 2010, 10:58 AM
Full report of recent activity...
Nothing new since your last login

Online Users

(last 5 minutes)
Andrew Parker

Link to Forum
(Can also access from Course Portal)

Link to Chat

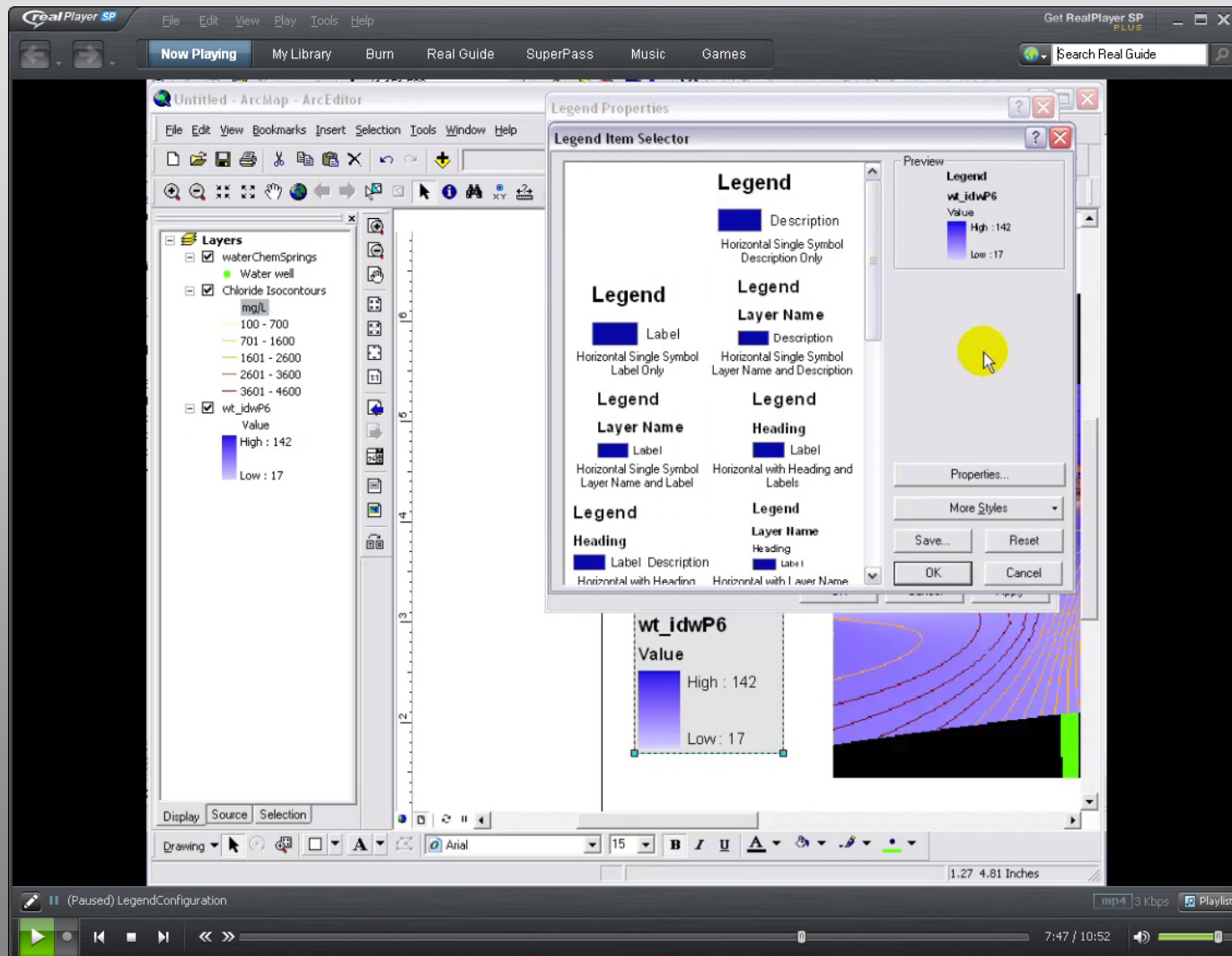
Who is online



Moodle Docs for this page

You are logged in as Andrew Parker (Logout)

Lectures and Lab Exercises via pre-recorded video



Accessing Group Meetings

Today's Date: Sat, 23 Jan 2010

EDUCATIONAL OUTREACH AND DISTANCE INSTRUCTION
COURSE PORTAL

Logout
Number of Logged in Users: 4
Connect Status: Success ✓
User Type: Instructor

Home SP10 ENVS412D Account Roster Help

Andrew Parker - ENVS412D Geographic Info Systems

Course Function Menu

Course Information
This course is taught live on Tuesday and Thursday from 12:30 to 1:45.

Course Lectures

- Enter Live Lecture
- Recorded Lectures
- Downloadable Lectures
- Portable Device Downloads

Course Activities

- Instructor Announcement
- Uploaded Course Files

Email

- Email From Portal
- Internal Email Account (0 new)

Additional Course Activities

- Navigate to Quizzes
- Navigate to Discussion Forum
- Navigate to Extended Course

Course Calendar (click on dates to view)

January 2010						
S	M	T	W	T	F	S
					1	2
3	4	5	6	7	8	9
10	11	12	13	14	15	16
17	18	19	20	21	22	23
24	25	26	27	28	29	30
31						

Instructor Announcements

Edit Announcements

Course Syllabus Posted. To navigate to the syllabus - in the left task pane, under the subheading "Additional Course Activities", click on "Navigate to Extended Course" button. In the center pane, under the "Topic outline" heading, click the link to "Course Syllabus". Most of our work will occur in the "Additional Course Activities" . Be prepared to use it often.

Click the Live Lecture Button

- will only work if Instructor initiates scheduled live session

Live Group or Individual Sessions through Connect Pro

- via the Live Lecture button from the Course Portal
- alternatively, individual sessions via Skype (more later)

NMT Meeting Present Help

Camera and Voice

Attendee List (2)

My Status: Active

Andrew Parker

Andrew Parker 2

NMT Chat

To: Everyone

The screenshot shows a Microsoft PowerPoint presentation titled "Course Portal". The main slide content includes:

- Course Portal
- Access the portal and login
 - <http://mediaserve.nmt.edu/portal/app/EODILecturePortal.html>

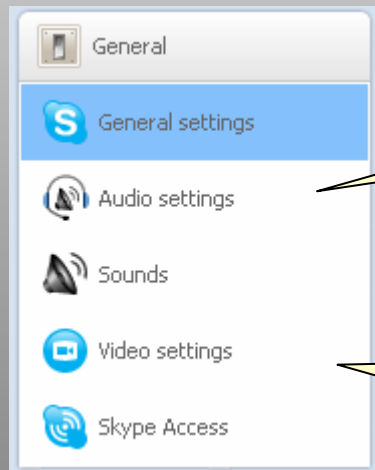
The slide also features a screenshot of the "Welcome - Course Portal" login page. The login page includes fields for "Enter your NMT ID Number" and "Enter your Password", a "Remember Me" checkbox, and a "Login" button. A sidebar on the right of the login page lists navigation options: 1. Course Portal 2.0 Information, 2. Course Portal Tutorial, 3. Support Help Desk, 4. Support Email, and 5. Distance Education Home. The footer of the slide reads "Introduction to GIS - Lesson 1: introduction to course portal and live lecture" and "2".

A yellow callout box with a pointer to the "Full Screen" button in the bottom right corner of the PowerPoint window contains the text: "Click 'Full Screen' button to enlarge shared screen".

Office hours via Skype

M-F 9am til 4pm

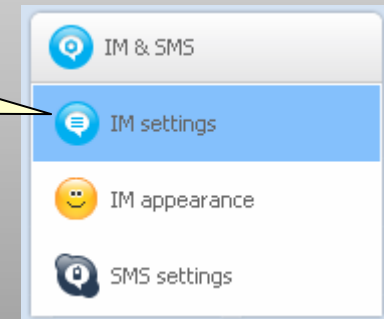
- Students will need to establish a Skype account (free) if not already established
- <http://www.skype.com>



Audio

Video via a web cam

Instant messaging



Screen sharing is also available with through Skype or Connect Pro

- A web cam is fun to have but not required
- A good headset with mic is recommended, but not required

Closing Statements

- Do not panic...
 - With distance learning participants will have help from the instructor and other students.
 - Instructor will monitor the chat and forums whenever possible.
 - Need screen sharing or remote assistance?
 - Just ask so a session can be opened in the “Live Lecture” or Skype.
- Contact info (in order of preference):
 1. Skype: source3computing
 2. Email: andrew@source3.com
 3. Cell: 505-350-5535
 4. I do not text message!! This is not an option and I will not reply.
- System Requirements
 - Each student will be given a one-year educational use only copy of ArcGIS 10.
 - ArcGIS does not run on Mac or Unix. If running on a Mac or Unix, you will need to either:
 - Dual boot into Windows
 - Run Windows in a virtual machine (i.e. Parallels or Virtual Box)
 - Or use one of the GIS machines in the computer pods.
 - Figure out how to use Grass GIS or QGIS